



**3 Bed House - End Terrace**  
**37 Whitwell Gardens, Alvaston, Derby, DE24 0UJ**  
**£1,000 Per Calendar Month**  
**Approx 914.94 sq ft**

 3  1  1  C



[attain-properties.co.uk](http://attain-properties.co.uk)

- Includes kitchen appliances
- Deposit replacement via Reposit
- Immediate move-in available
- Newly decorated interiors
- Large 915 sq ft floor area
- 3 spacious bedrooms
- End terrace house
- Additional Downstairs W.C
- Close to local amenities
- Viewing recommended

Welcome to this charming end-terrace house located in the desirable area of Whitwell Gardens, Alvaston, Derby. This delightful property boasts a generous living space of 915 square feet, making it an ideal home for families or professionals seeking comfort and convenience.

Upon entering, you will find a well-proportioned reception room that offers a warm and inviting atmosphere, perfect for relaxation or entertaining guests. The house features three spacious bedrooms, providing ample room for rest and personal space. The bathroom is thoughtfully designed to cater to your daily needs.

The property has recently undergone a transformation with new decorations, fresh paint, and modern carpets throughout, ensuring a contemporary feel. The large floor area enhances the sense of space, making it a welcoming environment for all.

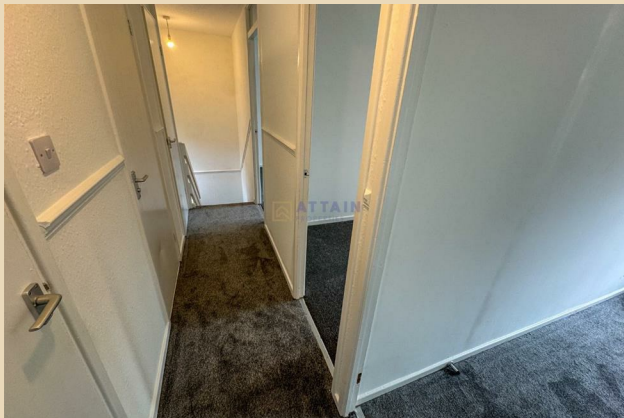
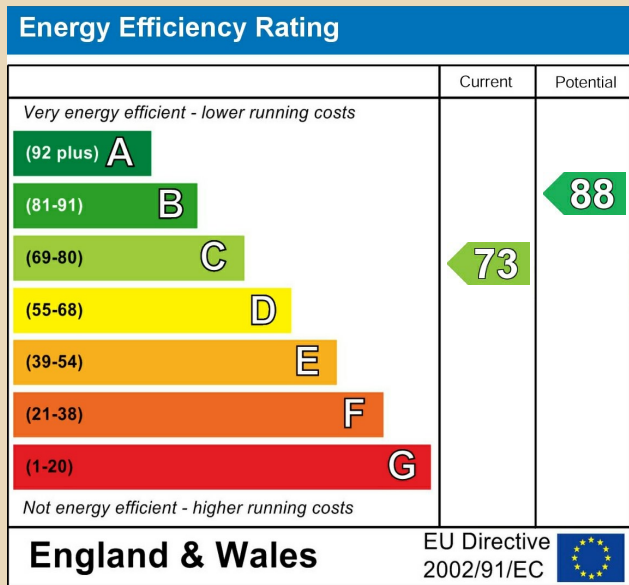
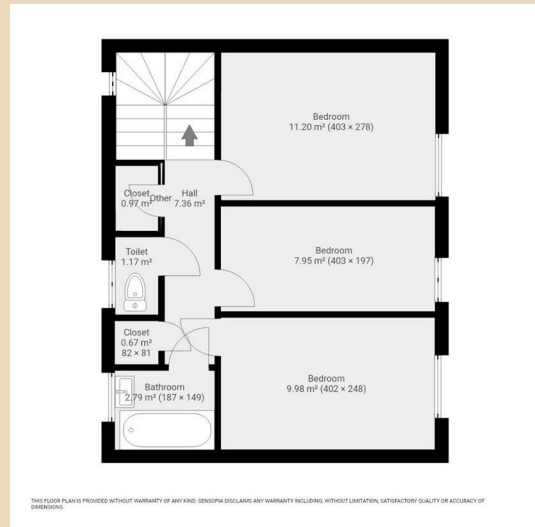
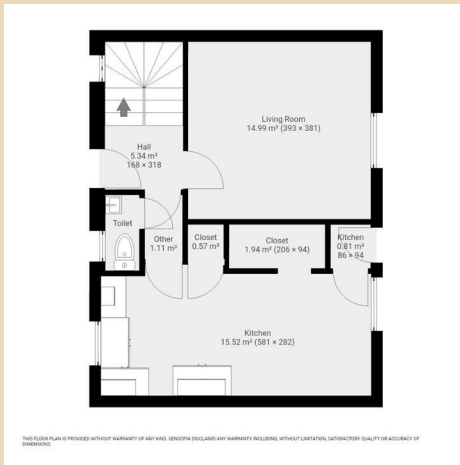
The kitchen comes equipped with essential appliances, including an oven, hobs, washing machine, and fridge freezer, allowing for a seamless move-in experience. For added convenience, a deposit replacement option is available through Reposit, making the financial aspect of moving in more manageable.

This home is available for immediate occupancy, allowing you to settle in without delay. With its prime location in Alvaston, you will enjoy easy access to local amenities, schools, and transport links, making it a perfect choice for those looking to enjoy the best of Derby living.

Do not miss the opportunity to make this lovely house your new home. Contact us today to arrange a viewing and experience all that this property has to offer.



These particulars do not constitute an offer or a contract neither do they form part of an offer or contract. The vendor does not make or give Attain Properties Limited nor any person employed has any authority to make or give any representation or warranty, written or oral, in relation to this property. Whilst we endeavour to make our sales details accurate and reliable, if there is any point which is of particular importance to you, please contact the office and we will be pleased to check the information for you, particularly if contemplating travelling some distance to view the property. None of the services or appliances to the property have been tested and any prospective purchasers should satisfy themselves as to their adequacy prior to committing themselves to purchase.



These particulars do not constitute an offer or a contract neither do they form part of an offer or contract. The vendor does not make or give Attain Properties Limited nor any person employed has any authority to make or give any representation or warranty, written or oral, in relation to this property. Whilst we endeavour to make our sales details accurate and reliable, if there is any point which is of particular importance to you, please contact the office and we will be pleased to check the information for you, particularly if contemplating travelling some distance to view the property. None of the services or appliances to the property have been tested and any prospective purchasers should satisfy themselves as to their adequacy prior to committing themselves to purchase.